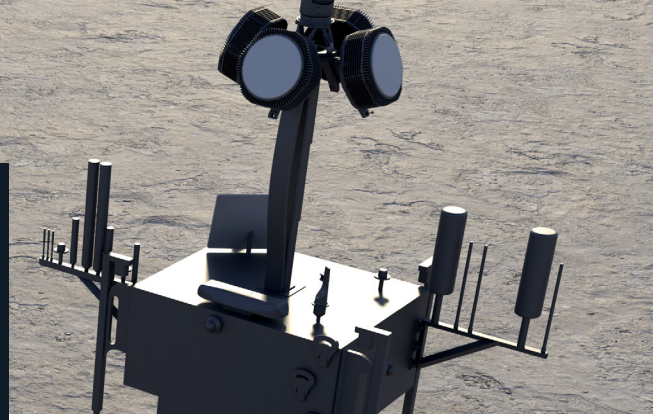


NiDAR™ X-SCOUT

RAPIDLY DEPLOYABLE UNMANNED REMOTE SENSORS AND COUNTERMEASURES



DROP-OFF CUAS FOR REMOTE LOCATIONS

Expand the observed arena with NiDAR X-SCOUT - our unmanned sensor drop-off unit. Delivered by pick-up truck or trailer, helping C2 to detect and deny threats at the furthest ranges from operation.

X-SCOUT is pre-configured and readily available for deployment in remote and hostile environments. Operational in under five minutes and then monitored and controlled remotely, reducing the risk to life and enhancing C2 capabilities.

Powered by NiDAR, multiple X-SCOUT units can operate in a mesh network with other NiDAR systems and effectors for extended end-to-end coverage, operated through the NiDAR intuitive interface for a complete single tactical picture.

Designed for fighting airborne threats, X-SCOUT with NiDAR's AI capabilities can detect, identify and deny UAS, equipped with RF and GPS jamming countermeasures.

REDUCED RISK TO LIFE - OPERATORS REMOTE FROM EMITTERS

OPERATIONAL IN UNDER 5 MINUTES

SYSTEM DORMANT WITH REMOTE POWER UP WHEN REQUIRED

MESHED SURVEILLANCE EXPANSION

360° EO camera

Long range radar for detecting UAS

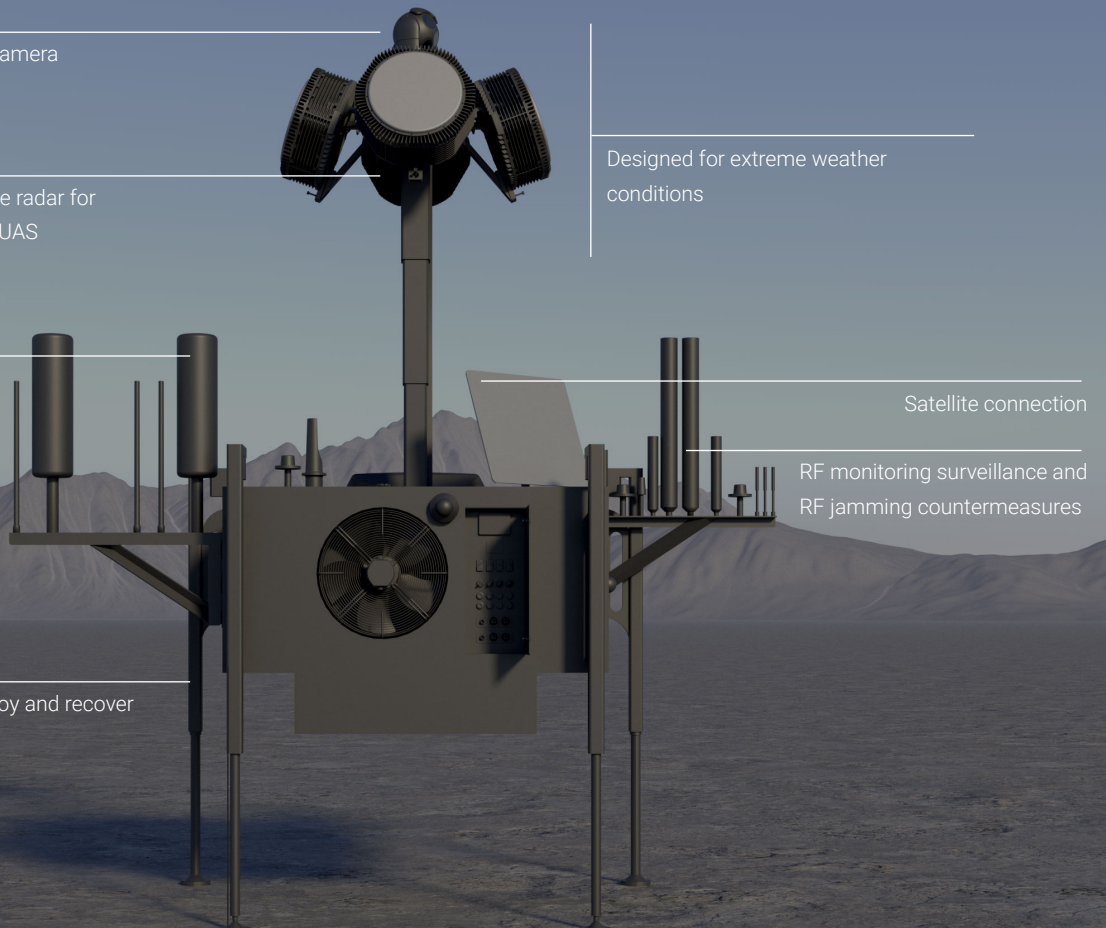
GPS jamming

Unmanned, rapid deploy and recover

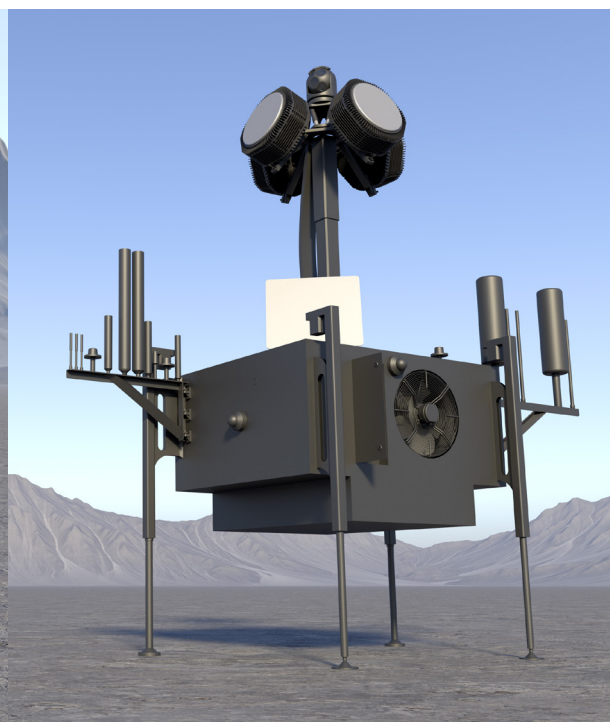
Designed for extreme weather conditions

Satellite connection

RF monitoring surveillance and RF jamming countermeasures



PERFORMANCE	CAT2 UAV classification	<15km
	CAT1 UAV classification	<5km
	GNSS Jamming	<10km
	Fuel autonomy	<7 days
	Deployment time	<5 minutes
	Operating temp conditions	-40C to +55C
DIMENSIONS	Weight	750kg (empty)
	Collapsed DIMS (H x W x L) mm	2430 x 1950 x 1630
	Deployed DIMS (H x W x L) mm	4040 x 3350 x 1630
	Positioning	GPS and digital compass
FEATURES	SENSOR PAYLOAD	Long-Range HD/IR Camera Software-Defined, Pulse Doppler Air Radar ADSB RF Detection and Jamming 360deg CCTV
	NiDAR CORE	NiDAR Command & Control AI Object Recognition NiDAR Video Tracking (NVT)
	OTHER HARDWARE	Integrated 8kVa generator and 120L reservoir Electrically actuated supports
	Positioning	Automated leveling Lightweight protective sensor cover



MARSS

MONACO
 Villa C Olympéa
 6-8 Rue Augustin Vento
 98000, Monaco

KSA
 King Khalid Int. Rd.
 Riyadh
 Saudi Arabia

BRISTOL
 40 Berkeley Square
 BS8 1HP
 Bristol, UK

LONDON
 14 Curzon Street
 W1J 5HN
 London, UK

+377 93 50 52 22
 Info@marss.com | marss.com